



**Notice:**

Export Compliance Information

This product is controlled by the export laws and regulations of the United States of America. The U.S. Government may restrict the export or re-export of this product to certain individuals and/or destinations.

For further information, contact the U.S. Department of Commerce, Bureau of Industry and Security or visit [www.bis.doc.gov](http://www.bis.doc.gov).

Disclaimer

Every effort has been made to ensure the correctness and completeness of the material in this document. No company shall be liable for errors contained herein. The information in this document is subject to change without notice. No warranty of any kind is made with regard to this material, including, but not limited to, the implied warranties of merchantability and fitness for a particular purpose.

# Contents

<b>1   Introduction</b>	<b>1.1</b>
About This Manual	1.1
Terms to Know	1.1
Reference Documents	1.1
<b>2   Safety</b>	<b>2.1</b>
Warnings	2.1
Radiation Hazard	2.2
<b>3   Overview</b>	<b>3.1</b>
Iridium Satellite Communications	3.1
Openport Terminal Components	3.1
Installer Supplied Parts	3.2
<b>4   Installation</b>	<b>4.1</b>
Parts and Tools	4.1
Choosing the ADE Location	4.1
Obstructions around the ADE	4.2
Signal Interference around the ADE	4.3
ADE Mounting Bracket and Pole	4.5
Installing the ADE	4.6
Grounding the ADE	4.7
Choosing the BDE Location	4.8
Installing the BDE	4.9
Connecting External Cables to the BDE	4.10
SIM Validation	4.12
Computer Set-up	4.12
PC & Network Configuration	4.13
<b>5   Initial System Configuration</b>	<b>5.1</b>
Configuring the System	5.1
Software Upgrade	5.8
<b>6   Testing the System</b>	<b>6.1</b>
<b>7   Educate the Customer</b>	<b>7.1</b>
<b>8   Basic Diagnostics</b>	<b>8.1</b>
ISU Web Pages	8.1
<b>9   Troubleshooting</b>	<b>9.1</b>
Access Denied	9.3
<b>Appendix A   Approvals</b>	<b>A.1</b>
Declaration of Conformity	A-1

# 1 | Introduction

**Thank you** for purchasing the state of the art Iridium Openport Terminal. Iridium is the only provider of truly global satellite voice and data communications solutions with complete coverage of the entire earth including oceans, airways and even polar regions. The Iridium Openport Terminal delivers reliable, secure, real-time, simultaneous high quality voice and up to 128kbit/s data connection to the Iridium satellite network from any point on the globe.

## About This Manual

This manual provides you with complete information on the use of the Openport Terminal. This includes the following:

- Starting the system
- How to make and receive voice calls
- How to transfer data across the Internet
- System Administration
- Troubleshooting

## Terms to Know

**ADE:** Above Decks Equipment, the radiating unit.

**BDE:** Below Decks Equipment, the user interface unit.

**ISU:** Iridium Subscriber Unit, The ADE and BDE together.

**POTS:** Plain Old Telephony System

**SIM:** Subscriber Identity Module

**PSU:** Power Supply Unit

**Provisioned:** A term used to indicate the SIM card is activated for voice and data connection. This can only be done by the Service Provider.




## 2 | Safety

**Warnings** The ADE and the BDE should be installed by a qualified professional technician trained in the installation of marine electronics and antennas. Failure to comply with these precautions or with specific warnings on the equipment or in this manual violates the safety standards of the design, manufacture and intended use of this equipment.

Follow all safety precautions carefully. Improper installation may result in injury or inability of the equipment to function properly. Only a qualified professional technician trained in the installation of marine electronics and antennas should remove the installation cover on the BDE.


**Iridium Satellite LLC disclaims all liability for the customer's failure to comply with these requirements and improper installation.**

**⚠ WARNING!**



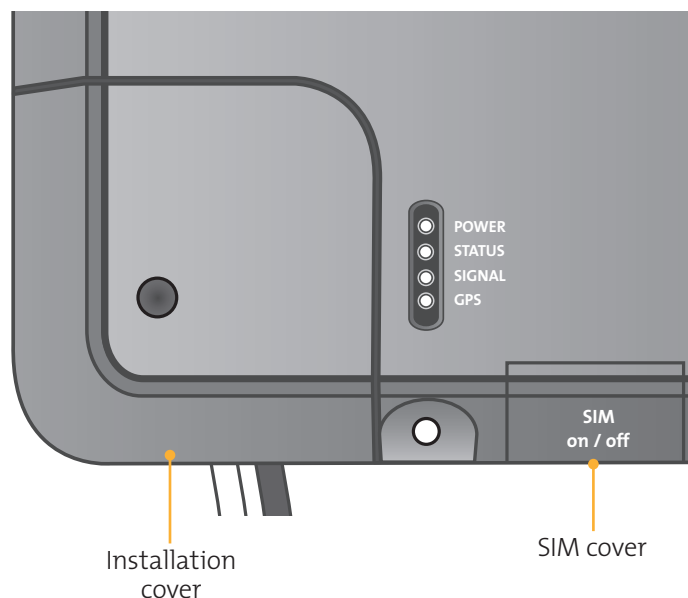
**The Below Decks Equipment (BDE) contains extra low voltage that may cause serious injury if opened or not grounded. Ensure the unit is properly grounded before operation and do not, under any conditions, open or dismantle the BDE.**

**⚠ CAUTION!**



**The Above Decks Equipment (ADE) transmits radio frequency (RF) that is potentially harmful. When the system power is ON keep all personnel a minimum of 1.0 m (3.3 ft.) from the antenna (see Radiation Hazard).**

Figure 2 | 1

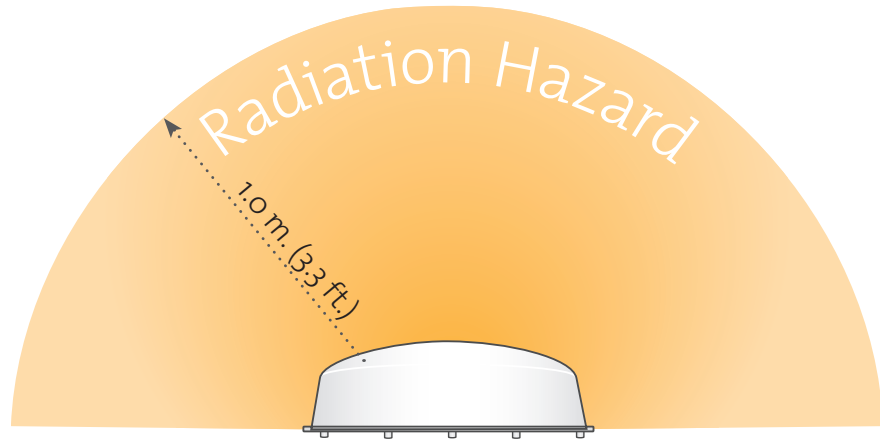


## Radiation Hazard

Potentially hazardous radio frequency (RF) is transmitted from the ADE. To avoid risk to personnel it is recommended people keep the following distances between themselves and the antenna when the system power is ON.

Personnel must maintain a minimum separation distance of 1m from the unit and installers must place the Above Deck Equipment transmitter in a manner to maintain this minimum spacing requirement.

Figure 2 | 2



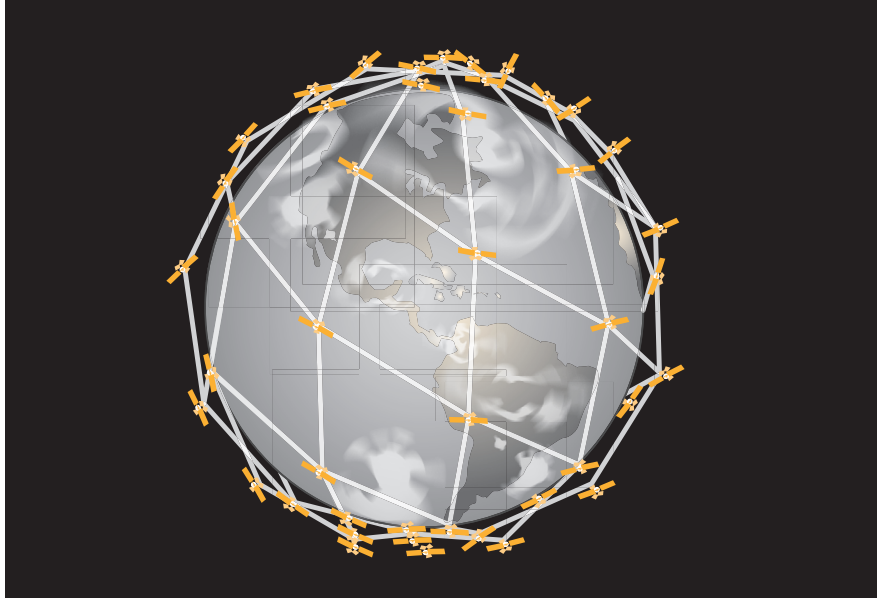
Description	Minimum Distance from Antenna
within 0° - 180° of the antenna elevation range	1.0 m (3.3 ft.)

# 3 | Overview

## Iridium Satellite Communications

Iridium's constellation consists of 66 low-earth orbiting (LEO), cross-linked satellites operating as a fully meshed network and supported by multiple in-orbit spares. Iridium has gateways in Arizona and Hawaii and additional telemetry, tracking and control facilities in Alaska, Canada and Norway. It is the largest commercial satellite constellation in the world.

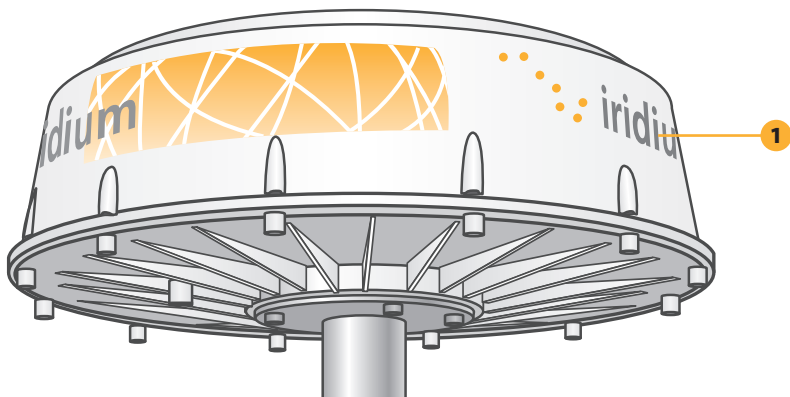
Figure 3 | 1



## Openport Terminal Components

### Above Decks Equipment

Figure 3 | 2

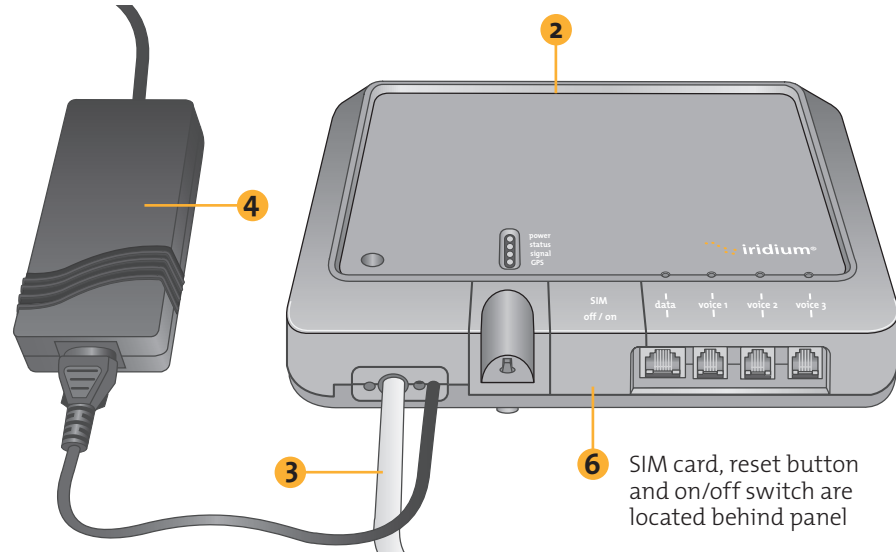


#### 1. Above Decks Equipment (ADE)

The Above Decks Equipment (ADE) provides the communication connection between the BDE and Iridium's satellites. The ADE will automatically locate and track Iridium satellites overhead.

## Below Decks Equipment

Figure 3 | 3



2. **Below Decks Equipment:** The Below Decks Equipment (BDE) is the modem to which you connect your telephones and computers. It is capable of handling three POTS/RJ11 telephone handsets and one Ethernet data connection.
3. **ADE / BDE Cable (20 m or 50 m cable included):** The cable connects the ADE to the BDE. It is shielded and has a waterproof connection for the ADE.
4. **AC Power Supply Unit:** The AC Power Supply Unit (PSU) provides power to the BDE.
5. **POTS Handsets (not shown):** Two handsets are provided with your OpenPort Equipment: a Captain's Phone, for installation on the bridge, and a Crew Phone, designed for quick access to Iridium Crew Calling services.
6. **SIM:** The SIM card validates the system at start-up, allows connection to the Iridium network and provisions the appropriate phone and data lines.
7. **Cable and Strain Relief Ties (not shown):** Used to secure cables.
8. **Mounting Bracket:** Platform to attach mounting pole and ADE to flat surface.



## Installer Supplied Parts

- 1. Mounting Pole:** Used to establish vertical position of ADE. Must have additional support if exposed to high winds (see Sec. 4: ADE Mounting Bracket and Pole).
- 2. Ethernet Cable:** Use if data connection is provisioned. Maximum length is 50 m.
- 3. Fasteners:** (4) M10 (length depends on bracket, must have 15-20 mm thread engagement with ADE. (3) M4 (with flange head or additional washers, length depends on bracket).

## Specifications

Operating Range: -30 C (37.4 F) to +70 C (158 F)



# 4 | Installation


## Parts and Tools

Before starting the installation check that you have all of the parts and they have not been damaged in shipment. The basic tools that you will need is as follows:

- Flat-head and Phillips-head screwdrivers
- Electric drill
- Wire cutters (optional)
- Open-end and Socket wrenches
- Hammer and center punch
- Adhesive tape, scribe or pencil
- Wire strippers and terminal lug crimper
- Connector installation tools
- Laptop computer

## Choosing the ADE Location

⚠ CAUTION!



The Above Decks Equipment (ADE) transmits radio frequency (RF) that is potentially harmful. When the system power is ON keep all personnel a minimum of 1.0 m (3.3 ft.) from the antenna (see Radiation Hazard).

Proper antenna location is critical to ensure the best communication between the Iridium Subscriber Unit (ISU) and the Iridium Satellite network. Follow these guidelines:

- **Obstructions:** To ensure the transmission and reception of a satellite signal the antenna should be clear of obstructions and blockage.
- **Radar Interference:** Energy from the radar may overload the antenna. Mount the antenna above the radar and outside the beam path of the radar. Do not mount the antenna at the same level as the radar.
- **Surface Area:** The mounting surface should be wide enough to accommodate the antenna's base. It should be flat, level (within  $\pm 1^\circ$ ), strong enough to support the antenna's weight 11 kg (24.25 lbs), and rigid enough to withstand heavy vibration.
- **Location:** To reduce the RF radiation exposure it should be located above areas accessible to passengers. (see Safety: Radiation Hazard).

## Obstructions around the ADE

To ensure the best possible connection with the Iridium satellite network the ADE needs clear exposure, in all directions, to the sky. Two types of obstruction that should be considered when deciding the placement of the ADE include: metallic and superstructure.

The loss of signal (dB) will increase the closer the obstruction is to the ADE. The table below shows the correlation between the size of the obstruction and the distance of the obstruction from the ADE and the amount of signal loss.

Figure 4 | 1

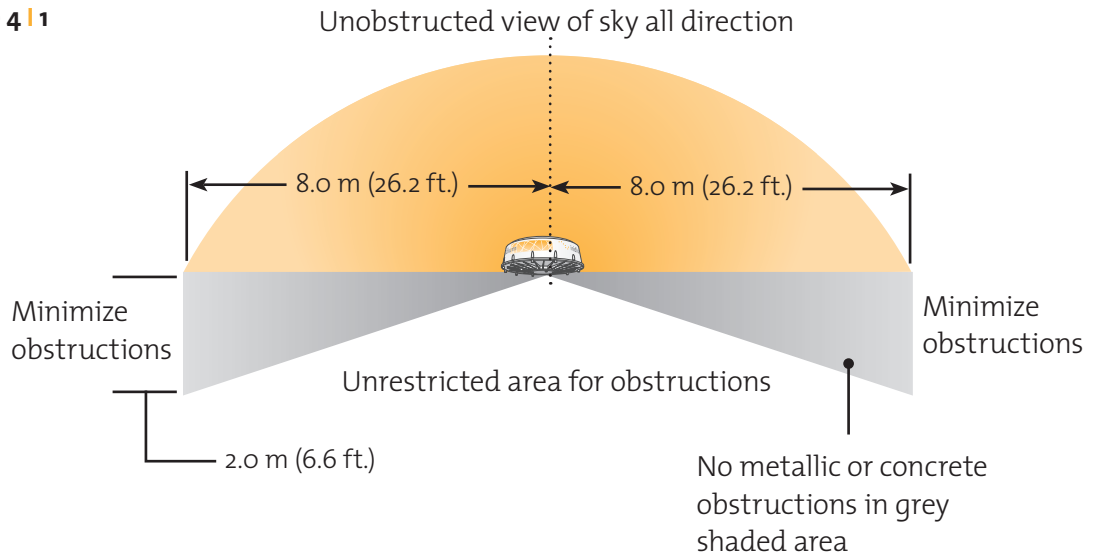


Table 4 | 1 Obstruction Signal Loss

Diameter of Obstruction	Obstruction Distance	Signal Loss
.2 m (.7 ft.)	< 2 m (6.5 ft.)	2 dB
	< 4 m (13.1 ft.)	1 dB
.4 m (1.3 ft.)	< 9 m (29.5 ft.)	2 dB
	< 31 m (101.8 ft.)	1 dB
.6 m (2 ft.)	< 22 m (72.2 ft.)	2 dB
	< 75 m (246 ft.)	1 dB
.8 m (2.6 ft.)	< 40 m (131.2 ft.)	2 dB
		1 dB
1.0 m (3.3 ft.)	< 65 m (213.2 ft.)	2 dB
		1 dB

## Signal Interference around the ADE

The ships radar and high power transmitters may cause signal interference. To avoid possible damage to the ADE and degradation of ADE performance the unit must be mounted as far away as possible from these units. In addition it should also be kept clear of other sources of interference such as other Iridium or Inmarsat terminals.

The diagrams and tables below are only guidelines as the minimum distances will be dependent on the exact transmitter characteristics as well as reflections from masts, decks and other items in the vicinity of the ADE. The tables below are to avoid damage and are not necessarily sufficient for correct operation.

**Table 4 | 2 Minimum Distance from X-band and C-band Radars**

X-band (~ 3cm / 10 GHz) and C-band (4-8GHz) radars		
Radar Power	Min distance at 15° vertical separation	Min distance at 60° vertical separation
0 – 10kW	0.8 m (2.6 ft.)	0.4 m (1.3 ft.)
30kW	2.4 m (7.9 ft.)	1.2 m (3.9 ft.)
50kW	4.0 m (13.1 ft.)	2.0 m (6.6 ft.)

**Table 4 | 3 Minimum Distance from S-band Radars**

S-band (~ 10cm / 3 GHz) radars		
Radar Power	Min distance at 15° vertical separation	Min distance at 60° vertical separation
0 – 10kW	0.4 m (1.3 ft.)	0.4 m (1.3 ft.)
30kW	1.0 m (3.3 ft.)	0.5 m (1.6 ft.)
50kW	2.0 m (6.6 ft.)	1.0 m (3.3 ft.)

**Important!** A vertical separation of 15° is always required from any radar.

**Table 4 | 4 Minimum Distance for other Communication and Navigation Equipment**

<b>System</b>	<b>Minimum Seperation</b>
VHF	5.0 m (16.4 ft.)
HF (ssb)	5.0 m (16.4 ft.)
Inmarsat	10.0 m (32.8 ft.) minimum. Inmarsat may interfere with Iridium at distances up to 60.0 m (196.8 ft) depending on the relative position of the satellites.
Other Iridium antennas (unity gain)	2.0 m (6.6 ft.)
Another Iridium Openport Terminal	6.0 m (19.7 ft.)
GPS	10.0 m (32.8 ft.) if it is in the same horizontal plane as the ADE
Compass	1.0 m (3.3 ft.) estimate

## ADE Mounting Bracket and Pole

Once a suitable location for the ADE has been determined it is necessary to select a mounting bracket and pole. Factors to consider in selecting a mounting bracket and pole include:

- The weight of the unit (11 kg, 24.25 lbs)
- The size of the unit (230 mm high and 570 mm diameter)
- Resonance

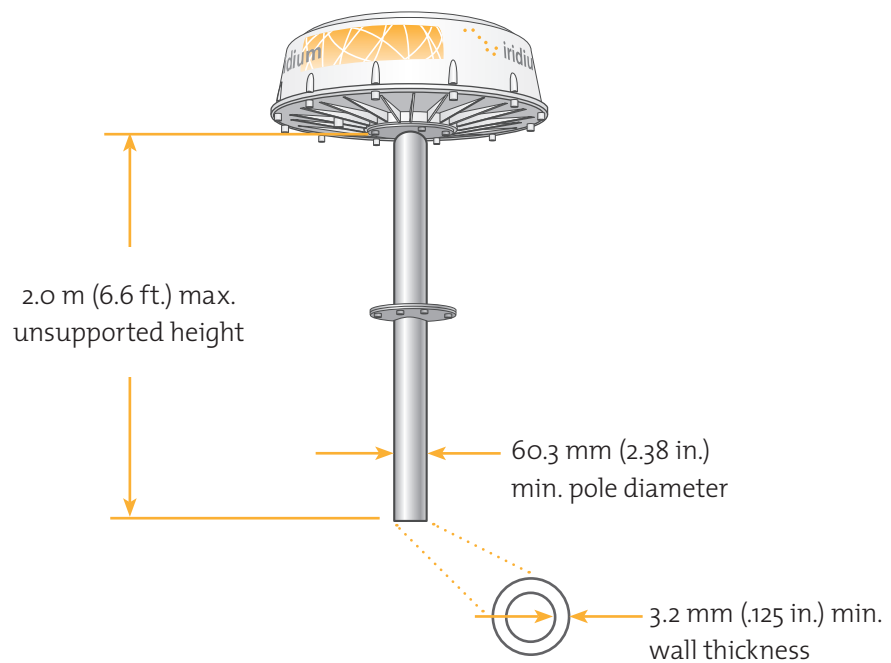
The mounting bracket and pole must be capable of supporting the weight of the unit. More importantly when selecting a suitable mounting pole the limiting factor is resonance, not strength. Aerodynamic forces in the range 0 – 10 Hz for wind speeds up to 60 mph (storm force 10) will cause the ADE to vibrate.

Depending on wind conditions, certain pole diameters and lengths will have a natural tendency to vibrate. Minimize the potential for vibration, and damage to the unit assembly, by carefully choosing a pole diameter and length that can sustain the expected weather conditions the vessel is likely to encounter. To avoid resonance the following guidelines are recommended:

- Minimum pole diameter:  $D = 60.3 \text{ mm}$  (2.38 in.)
- Minimum wall thickness:  $t = 3.2 \text{ mm}$  (.125 in.)
- Resonance

For 100 mph winds (hurricane force 12) the unsupported length should be reduced to 1.0 m (3.3 ft.). Longer poles are possible if additional support is provided such as guy ropes.

Figure 4 | 2

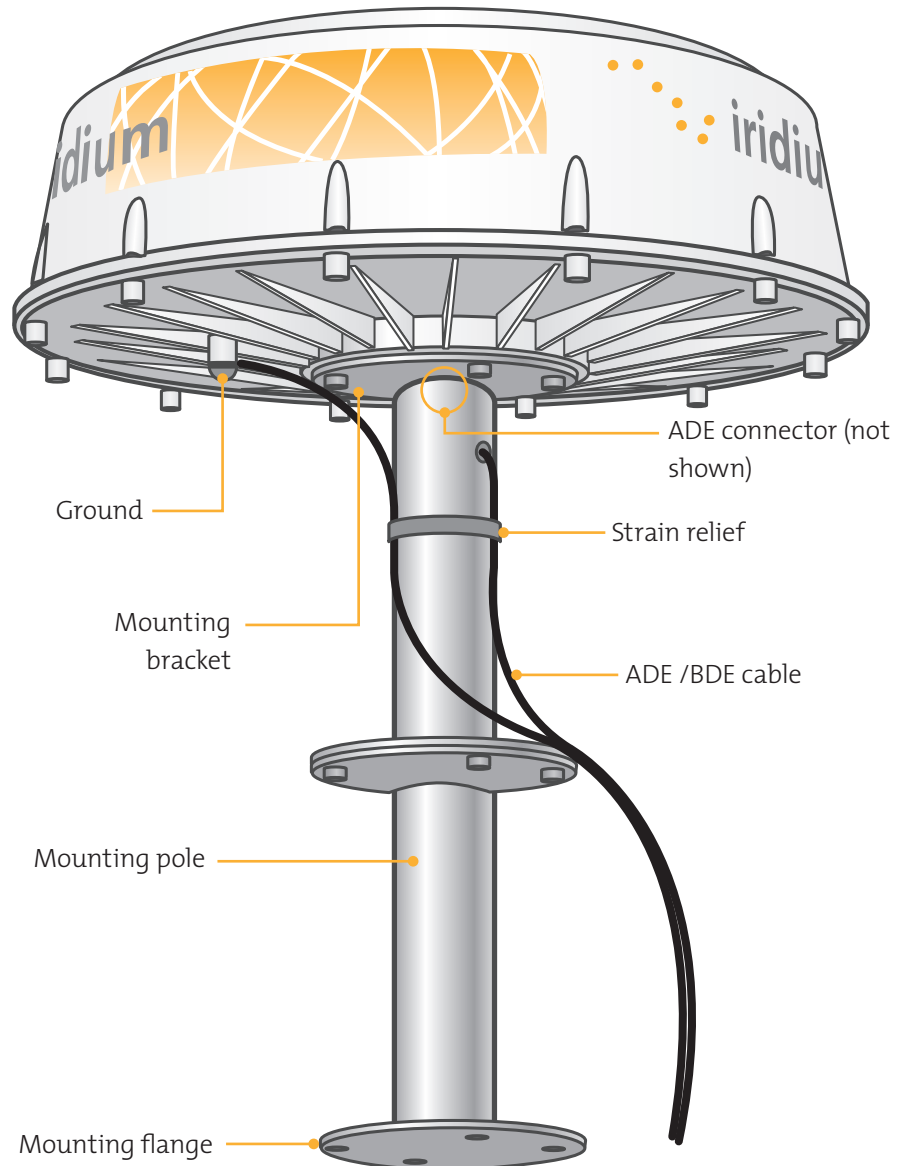


## Installing the ADE

There is more than one approach that can be taken to install the ADE. The installation of the ADE is dependent on the vessel structure. Follow these generic steps to install the ADE:

1. Determine location for ADE. If necessary, drill / cut-out a cable access hole in the mounting surface.
2. Fasten mounting pole to level surface. If a mounting flange is used, apply a sealant between flange and mounting surface to protect against leakage and corrosion.
3. Fit ADE / BDE cable to ADE connector, install strain relief for cable.
4. Fasten mounting bracket to ADE.

Figure 4 | 3





**Note:** The mounting configuration may vary depending on the factors discussed (e.g.: location, pole selection). When mounting the bracket ensure:

- The M10 bolts have 15 – 20 mm thread engagement into the ADE
- The ADE / BDE cable can be connected to the connector in the center of the ADE.
- The vent on the ADE is not covered
- It is also advisable to have the labels visible after mounting.

To mount the bracket to the ADE:

**Important!** Due to the weight of the ADE it is recommended that two people work together to maintain balance when lifting and positioning the unit for assembly or placement.

- a. Connect the ADE / BDE cable to ADE. If necessary, thread the cable through the mounting pipe.
- b. Screw the M10 bolts into the ADE

5. Fasten mounting bracket to mounting pole.

**Note:** If required, fit earthing strap between ADE grounding point and vessel superstructure.

## Grounding the ADE

The ADE provides a grounding connection for enhanced protection from lightning induced transients, connection is not required in terms of user safety or protection of the ADE from the telephone network (as this is provided in the BDE). The use of this connection must be considered as part of the overall grounding and lightning protection scheme for the vessel as a whole.

If used, serrated washers should be fitted on either side of the cable lug (note: installer provided), so that one is under the head of the M10 bolt and one is against the metal base plate. Silicone grease or joint compound should be applied between all contact surfaces, and an impervious coating should then be applied over the whole joint to exclude moisture from all metal surfaces, e.g. using self-amalgamating tape or a shrink-fit rubber boot.

## Choosing the BDE Location

The Below Decks Equipment (BDE) should be located within the range of the 50 m ADE / BDE cable and mounted with the cable connectors pointing downwards on a flat vertical surface (wall) which is sheltered from the elements (e.g: water).

The wall must be able to support the weight (1.35 kg, 3 lbs) and have adequate space for the unit that is 250 mm (9.8 in.) x 190 mm (7.5 in.) x 55 mm (2.16 in.).

Space must be provided for the following cables:

- Power cable
- ADE /BDE cable
- Data cable
- Handset (3 max.)

The cables connected internally to the BDE (e.g.: power, cable from ADE) should be attached to the BDE housing with strain reliefs. It is also advisable to protect the cable connection with external strain relief. The cables that connect to the data and handset ports must have external strain relief.

Power to the BDE may be AC or DC. AC power suitable for connecting the AC Power Supply Unit (PSU) should be: 110/240V, 50/60Hz. DC power should be: 2 wire plus earth nominally 12 or 24VDC capable of supplying 50W continuous, 80W for .25 seconds at switch-on.

If appropriate, use the provided cable when connecting the AC PSU to the AC power source. Otherwise, the installer should provide a standard IEC cable with the appropriate country plug. The 2-way connector should be connected to the “power in + and –” terminals within the installation section of the BDE.

When using DC power the installer will need to provide a suitable 2 wire + earth cable capable of providing 12/24VDC nominal (11V min, 32V max) and 50W continuous / 80W for .25 seconds at switch-on at the BDE. The positive and negative wires must be terminated using the connector from the AC PSU (provided). The 2-way connector should be connected to the “power in + and –” terminals within the installation section of the BDE. The earth should be connected to the earth tag inside the installation area of the BDE.

## Installing the BDE

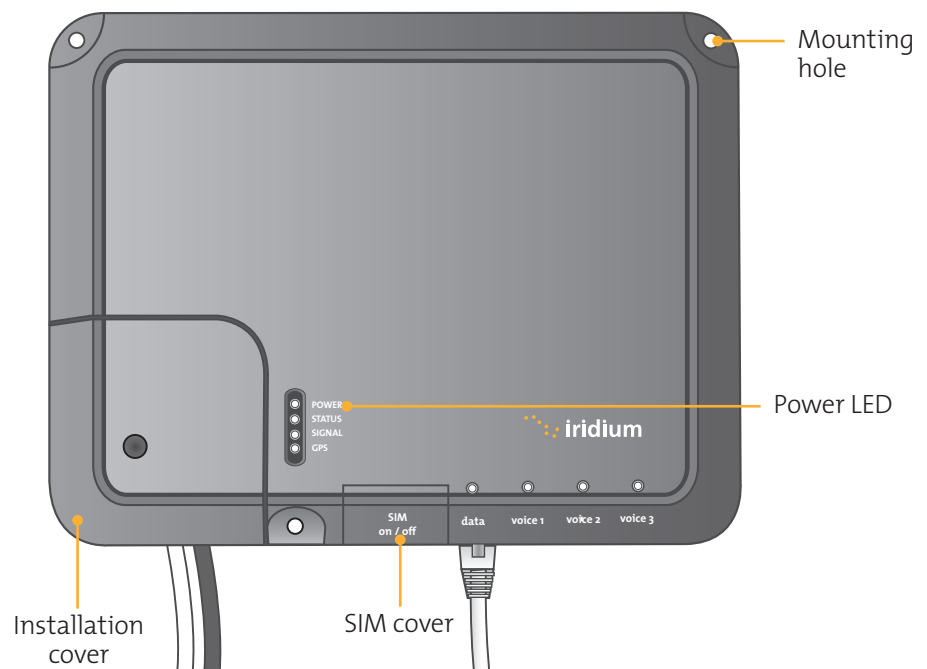
After a suitable location has been chosen, mount the BDE:

1. Layout the locations for the mounting screws, 3 total (see template at the end of the manual). The BDE is mounted with the connector edge facing down. Use the included template as a guide for drilling the mounting holes.
2. Drill and tap holes for M4 flange style mounting screws

**Note:** Alternative screws or screw / washer combination may be used. The flange must fit into a 4.5 mm (.18 in.) hole.

4. Hold and screw the BDE against the wall.
5. Remove the SIM cover (retain)
6. Switch the ON/OFF switch in to the OFF position
7. Remove installation cover from bottom left hand corner of BDE (retain cover and screw)
8. Connect internal cables:
  - a. Fit power feed (either AC or DC) to power connector on BDE, use strain relief provided within BDE. The power LED should light Amber.
  - b. Fit cable from ADE to BDE, use strain relief provided within BDE
9. After checking that all the connections are securely made and have strain relief, replace and fasten the installation cover.

Figure 4 | 4



## Connecting External Cables to the BDE

The data and handset connections are on the connector edge of the unit. There is one data connection and three handset connections. The data connection is marked as “data” and the handset connections are identified as “Voice 1”, “Voice 2” and “Voice 3”.

Figure 4 | 5

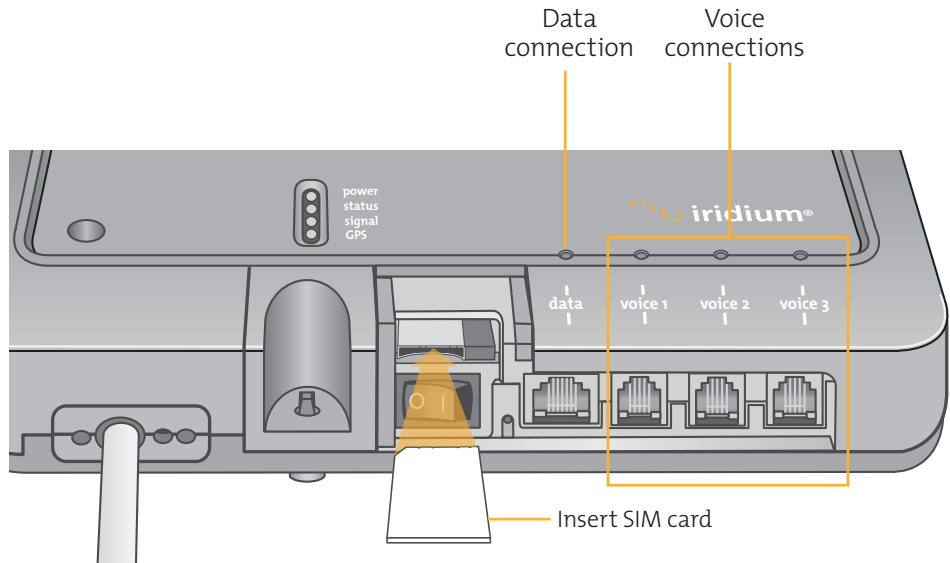


Figure 4 | 6

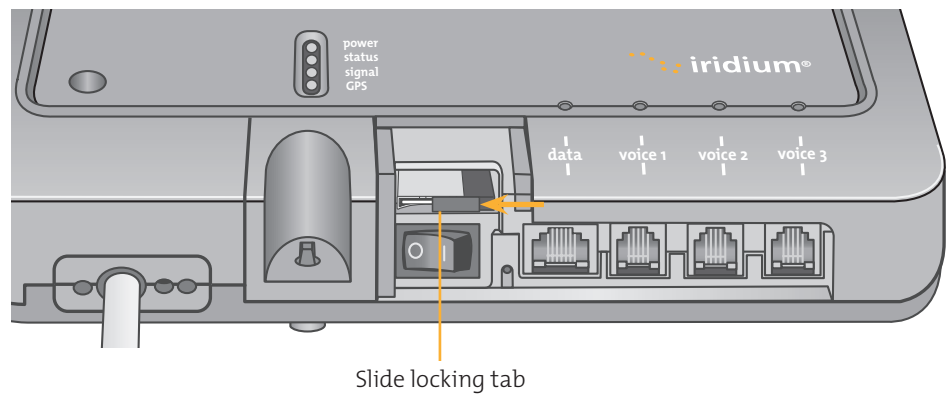
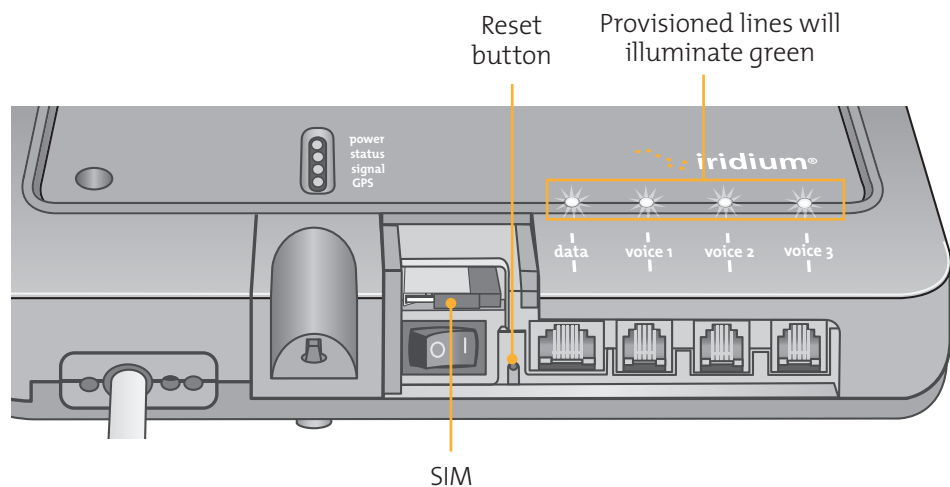


Figure 4 | 7



The handsets connected to the BDE must be POTS / RJ11 handsets. The data port provides an Ethernet connection of 10BaseT/100BaseT using an RJ45 connector connected as MDI-X. If the Below Decks Equipment (BDE) is to be connected to a down-stream port of an Ethernet hub or switch then the user will need to use a cross-over cable. Again, the data port must be provisioned to connect to the Internet. The data LED will illuminate green.

**Note:** According to standard Ethernet specifications, the maximum length of the cable from the Ethernet equipment to the Above Decks Equipment must not exceed 100m. If the standard ADE to BDE length of 50m has been used, this means that the data cable from the BDE to the Ethernet equipment should be no longer than 50m.

To connect external equipment to the BDE:

**Note:** In order for the data and handset ports to be active the SIM must be provisioned and placed in the BDE.

1. Connect external equipment to the appropriate port. (e.g.: computers are connected to the data port, handsets are connected to a port marked "Voice 1, 2 or 3").
2. Provide external strain relief for cables connected to the BDE.
3. Insert the SIM card and slide the locking tab in place.
4. Switch ON/OFF switch to ON position. The POWER LED should light green, the STATUS LED should flash red for a few seconds, then illuminate amber.
5. Replace the SIM cover.

## SIM Validation

In order to access the Iridium network the BDE must have a valid SIM installed. Upon activation by the Service Provider, the customer's SIM will be provisioned with the service level (available bandwidth) and the number of voice lines available. For example: There are three phone lines available but you choose to only provision one of them. Upon system activation only one phone line will be available.

Contact the service provider to add or remove voice phone lines. Once the service provider has added or removed voice lines, the BDE will automatically update the SIM at the next network connection.

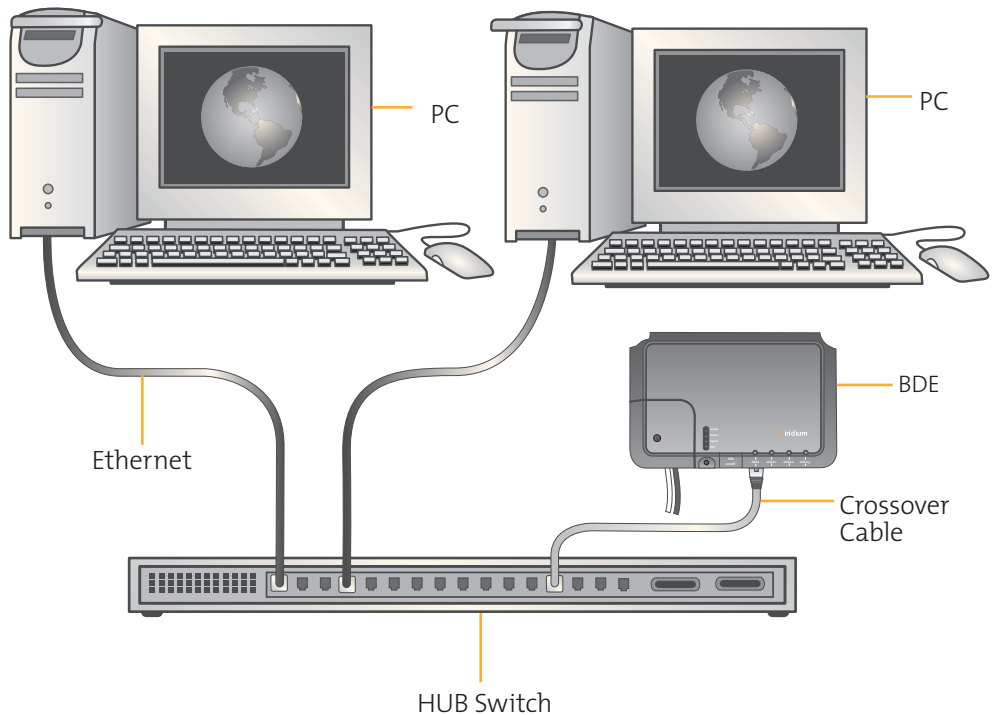
**Note:** If the SIM card is removed or unlocked any voice or data calls will be terminated immediately. The SIM must be reinserted and locked into position using the locking mechanism on the SIM card holder, then the unit must be switched off and back on again to be reactivated.

## Computer Set-up

The internal structure of the computer network depends on the customer's needs. The ISU is capable of handling everything from the connection of a single PC to a complete Ethernet network. The data port provides an Ethernet connection of 10BaseT/100BaseT using an RJ45 connector connected as MDI-X.

If the Below Decks Equipment (BDE) is to be connected to a down-stream port of an Ethernet hub or switch then the user will need to use a cross-over cable. Again, the data port must be provisioned to connect to the Internet. The data LED will illuminate green.

Figure 4 | 8



## PC & Network Configuration

### ISU Network Set-up

The internal structure of the computer network depends on your needs. The ISU is capable of handling everything from the connection of a single PC to a complete Ethernet network. The data port provides an Ethernet connection of 10BaseT using an RJ45 connector.

If the Below Deck Equipment (BDE) is to be connected to a down-stream port of an Ethernet hub or switch then the user will need to use a crossover cable. Data Service must be provisioned before you can connect to the Internet. The data LED will be illuminated green if your OpenPort unit is provisioned for data.

#### For a single PC

- Connect directly to the data port of the BDE
- Use a straight through Ethernet cable
- Configure PC for static configuration ( for more details see Windows PC Set-up for Static Configuration)

#### For multiple PCs

- Connect the switch/hub/router to the data port on the BDE using a crossover cable.
- Connect the PCs to the Ethernet switch, hub or router (Note: these multiple devices will be sharing the same satellite connection over the Iridium network, the more devices connected the smaller the share of the connection.)
- Depending on how your ship-side LAN is configured you may or may not want the ISU to act as a DHCP server and to perform DNS forwarding, see the following section to change this.

### Configuration of LAN Settings

The OpenPort ISU allows you to configure the following LAN settings, via the web pages when logged on as 'admin'. These settings include:

- IP Address
- Subnet Mask
- DHCP Server and IP Address Range to Use
- DNS Forwarding

#### IP Address

This is the IP address of the ISU as seen from the vessel. The factory default is 192.168.0.1. You should not change this default unless there is already LAN equipment on the vessel, in which case you must set this to an unused IP address of the ship-side LAN.

### **Subnet Mask**

This defines the subnet used on the vessel. The factory default is 255.255.255.0. You should only change this default if you change the IP address of the ISU. All network devices must use the same subnet in order to communicate with one another.

### **Dynamic Host Configuration Protocol (DHCP) server**

This automatically provides unique IP addresses and appropriate configuration parameters to each network device connected to the ISU. In the current configuration, DHCP is disabled.

**Note:** While DHCP is disabled, devices connected to the ISU will need to have their network settings manually configured. There must only be one DHCP server on any network segment. Please see insert on “how to configure network connections manually with windows.”

### **DHCP IP Address minimum and maximum**

This sets the range of IP addresses for the DHCP server to use. The factory default is 192.168.0.2 to 192.168.0.254. The range specifies the maximum number of devices on the network. Both the maximum and minimum value must be in the same subnet.

### **Domain Name System (DNS) forwarding**

DNS is used to convert network names (such as www.google.com) into the IP addresses needed to connect to the device. The factory default is disabled. The ISU acts as a switching station so that it automatically forwards DNS requests to the appropriate DNS server.

Once you change the LAN configuration and press the ‘Update IP Configuration’ button the ISU will reboot to apply the configuration changes - this will drop any calls. Once the ISU has rebooted any connected network devices may take up to 10 minutes to automatically obtain new settings. During this switch over time the network devices may not be able to communicate with the ISU or/and duplicate IP address settings can occur.

If you change the LAN settings it is advisable to reboot any attached devices to avoid this issue

**Note:** The LAN Settings can be reset to the factory defaults using the reset switch on the BDE.



Exactly how you configure the network clients on the vessel will vary depending on the operating system. Refer to your operating system manual or technical support organization to obtain the exact details to achieve this. You should normally use the ISU DHCP server to automatically configure the correct client settings. If you use this option the clients must be setup to obtain their settings automatically. This is the easiest way to setup a network.

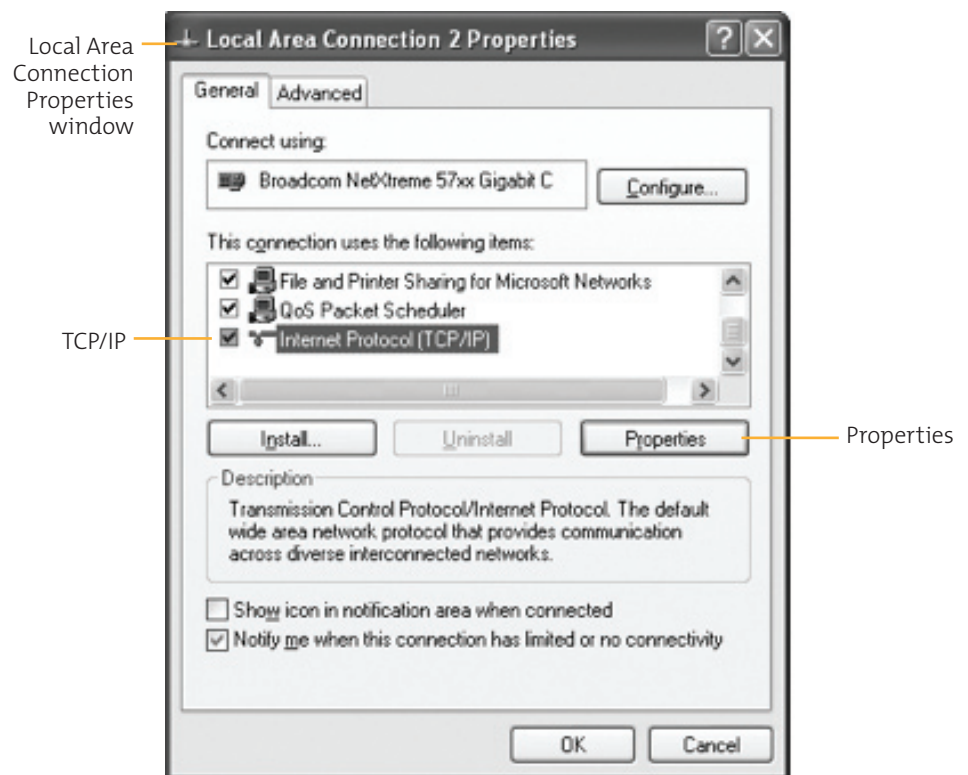
If you use a static configuration you must ensure that the ISU is the default gateway, that the ISU is on the same subnet as all devices and each network address is unique.

### Windows PC Set-up for Static Configuration

Depending on the needs of your computer network, it may be necessary to statically assign an IP address to the computer directly connected to the Iridium OpenPort unit. The following steps cover a Windows XP configuration however they can generally be applied to all Windows setups. For additional assistance in configuring your desktop computer for a static connection please contact your local computer administrator.

1. Open Network Connections located in the Control Panel.
2. Locate the icon for the Local Area Connection connected to the OpenPort unit and right-click Properties.
3. From the list of connections used, highlight Internet Protocol (TCP/IP) and click Properties

Figure 4 | 9

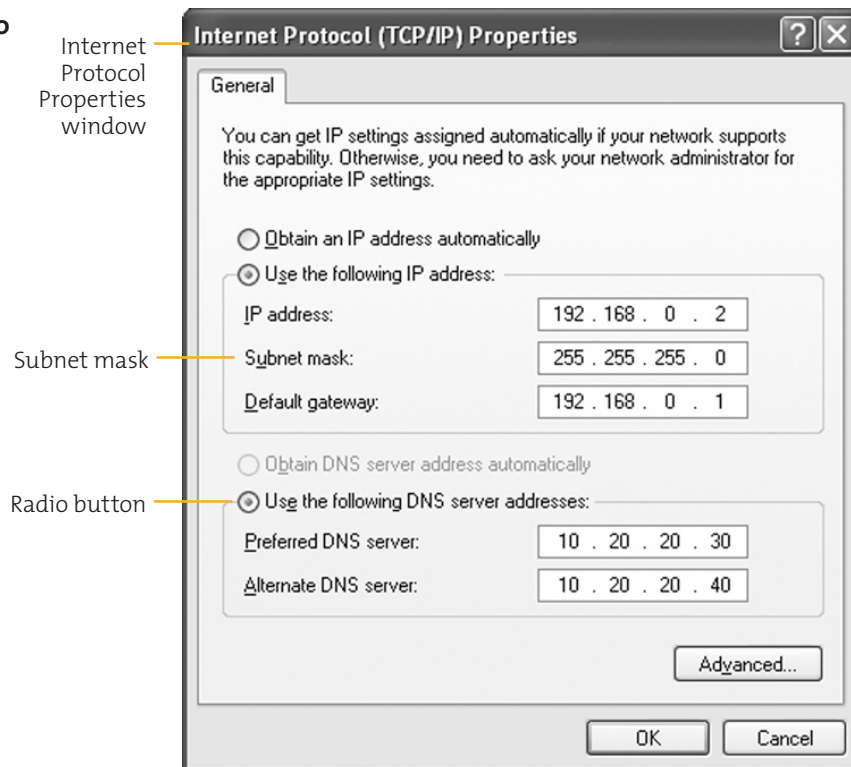


4. On the Internet Protocol (TCP/IP) Properties page, click the radio button Use the following IP address: and enter an IP address to be used by this computer.

**Note:** This IP address should be different from the OpenPort unit while still being in the same IP range. For example, if the OpenPort unit is configured as 192.168.0.1 (default), then a computer connected to the ISU must be configured within the IP range 192.168.0.x where x is anything between 2 and 254.

5. Next, set the Subnet mask: to 255.255.255.0
6. Enter the IP address of the OpenPort unit for the field marked Default gateway.
7. Lastly, check the radio button for Use the following DNS server addresses: and enter the DNS server address provided by your Service Provider for the Preferred DNS server address. If an address is not provided use the IP address as shown below.
8. Click OK to close any open properties pages.

Figure 4 | 10



## Accessing the Web

As long as your data port is provisioned and the proper physical connections made, access the Internet simply by starting your web browser. The ISU allows you complete functionality to upload and download data, web pages, and email. Note: Large files or graphic intense web pages will take longer to transfer or display.

# 5 | Initial System Configuration

## Configuring the System

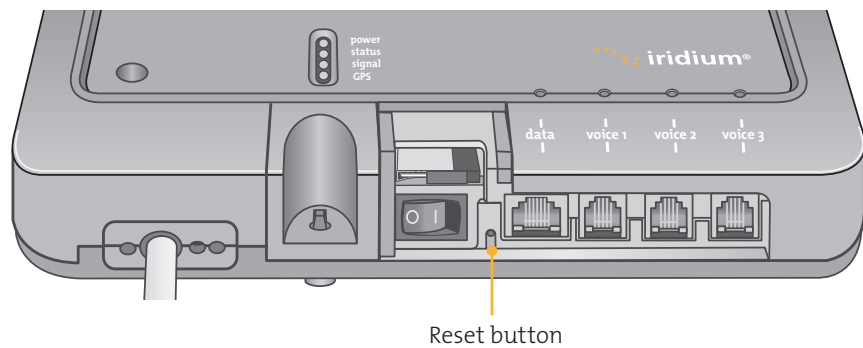
There are two levels of diagnostic information available, basic and administrator. Configuring the system and full diagnostics can only be done by the System Administrator and requires a login password.

### To access the ISU Web Pages:

1. Connect a PC to the data port on the BDE
2. Open the web browser and in the web browser address window, type: `http://192.168.0.1`.

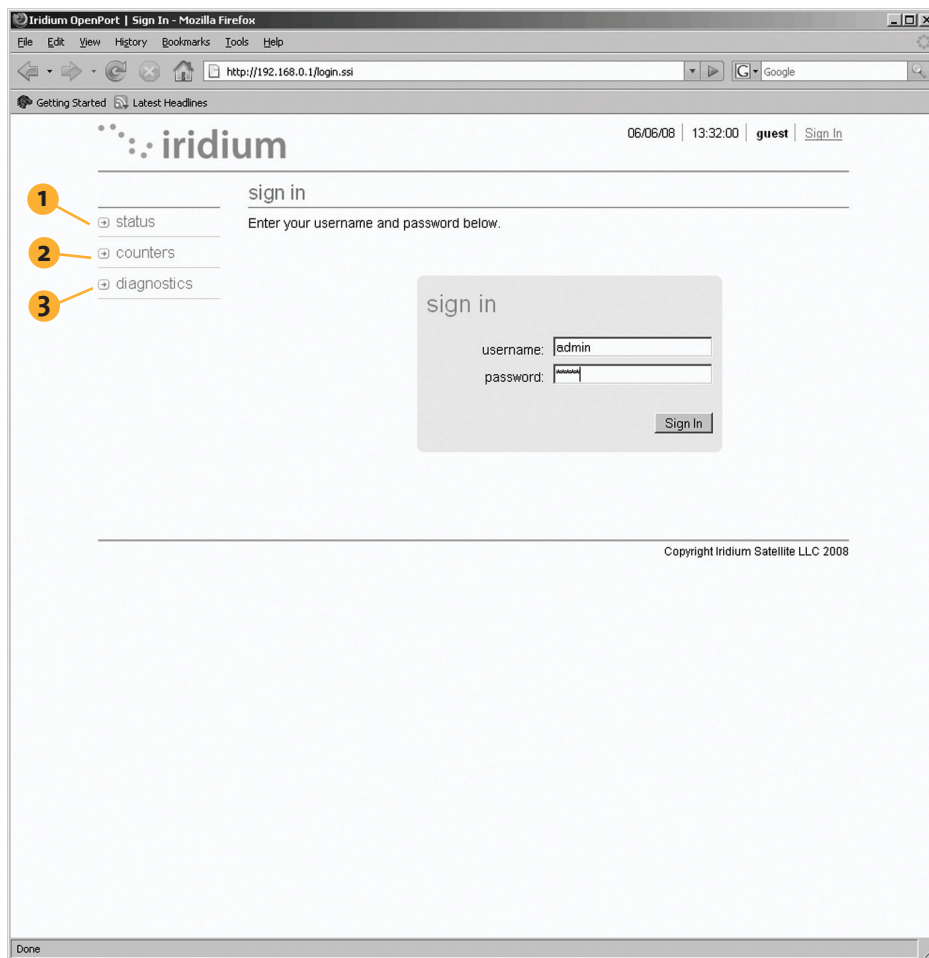
**Note:** The default IP address is assigned to the ISU at the factory. The IP address can be changed if there are multiple ISU's at a single site. If this has been done then type in the new IP address. To reset the IP address back to the default (192.168.0.1), press the network reset button on the BDE.

Figure 5 | 1



3. Select "Login" for administrator level diagnostics. Type in the user name and password specified by Iridium (default user name and password is "admin"). Call your Service Provider if login fails.

Figure 5.2



4. Select the appropriate link:

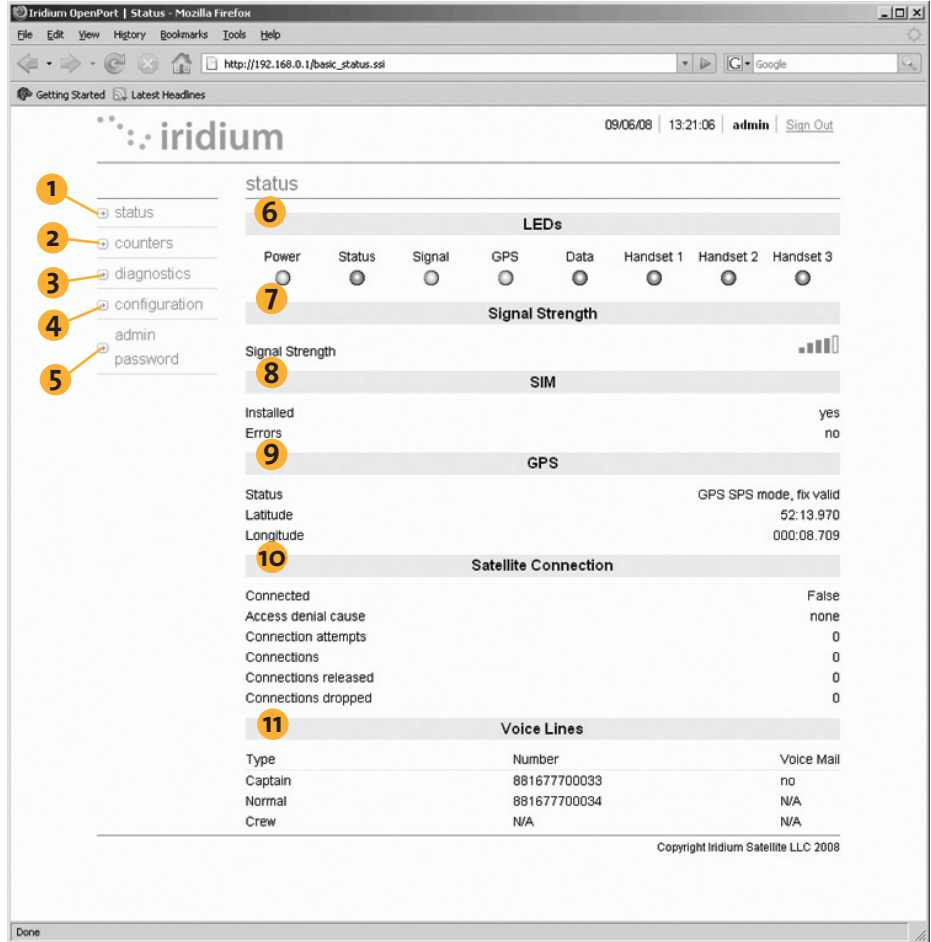
**Note:** The information displayed on the web pages is not dynamically updated. To update the information, refresh the web page from you browser.

**Select to link to:**

1. Status
2. Counters
3. Diagnostics

# Status

Figure 5 | 3



## Select to link to:

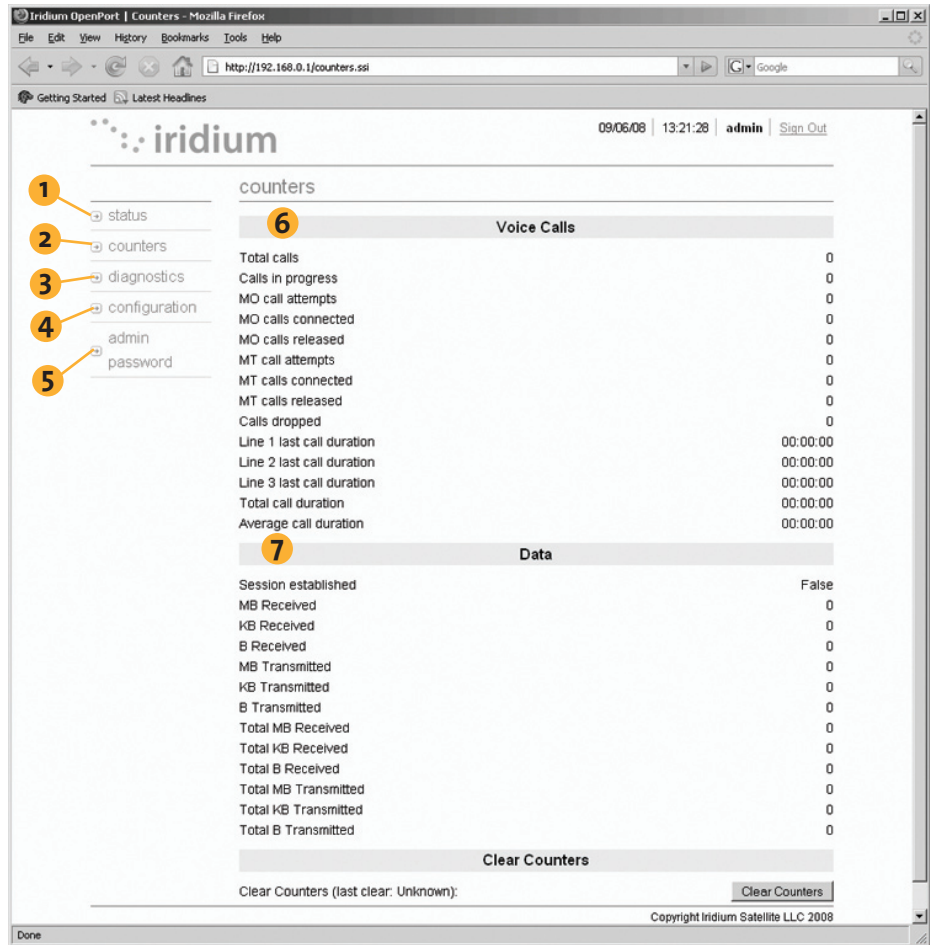
1. Status
2. Counters
3. Diagnostics
4. Configuration
5. Admin Password

## Indicators:

6. LEDs
7. Signal Strength
8. SIM
9. GPS (status, location)
10. Satellite Connection
11. Voice Lines

# Counters

Figure 5 | 4



**Select to link to:**

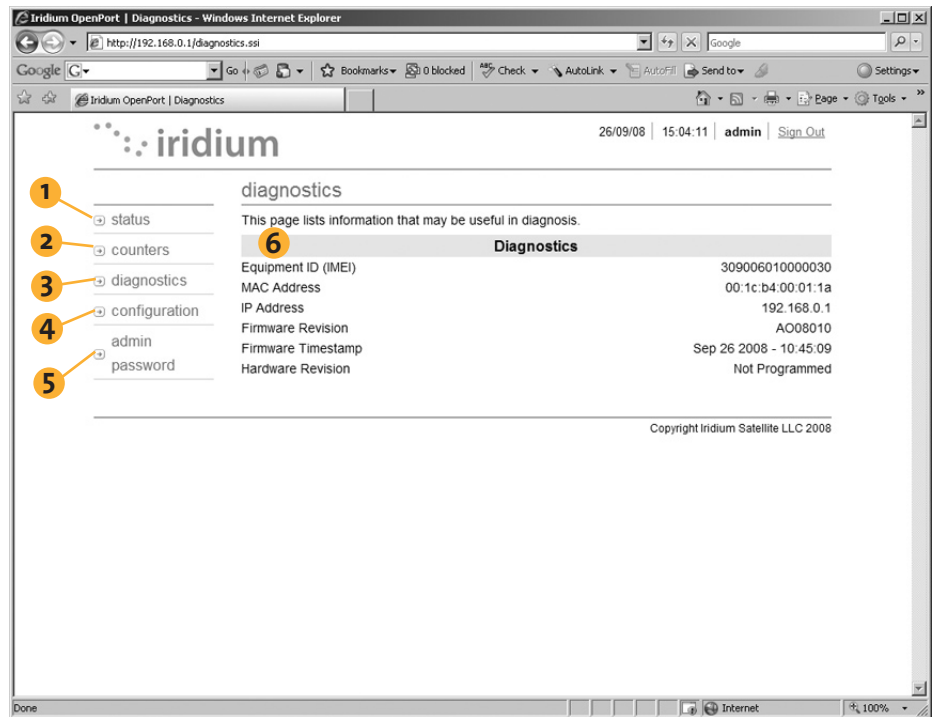
- 1. Status
- 2. Counters
- 3. Diagnostics
- 4. Configuration
- 5. Admin Password

**This page provides:**

- 6. Voice Call information
- 7. Data Use information

# Diagnostics

Figure 5 | 5



## Select to link to:

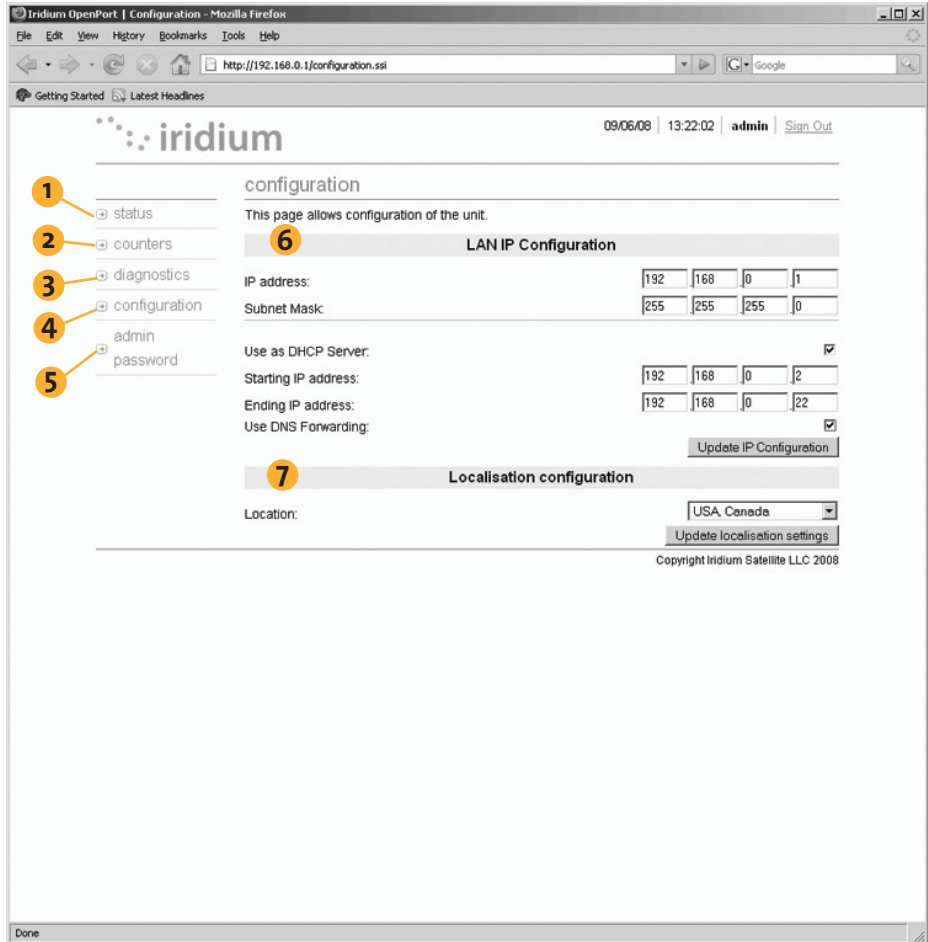
1. Status
2. Counters
3. Diagnostics
4. Configuration
5. Admin Password

## This page provides:

6. Useful diagnostic information such as:
  - Equipment ID
  - MAC & IP address
  - Hardware & Firmware revision level

# Configuration

Figure 5 | 6



**Select to link to:**

- 1. Status
- 2. Counters
- 3. Diagnostics
- 4. Configuration
- 5. Admin Password

**This page provides:**

- 6. LAN IP configuration
- 7. Localisation configuration



# Admin Password Change

Figure 5 | 7

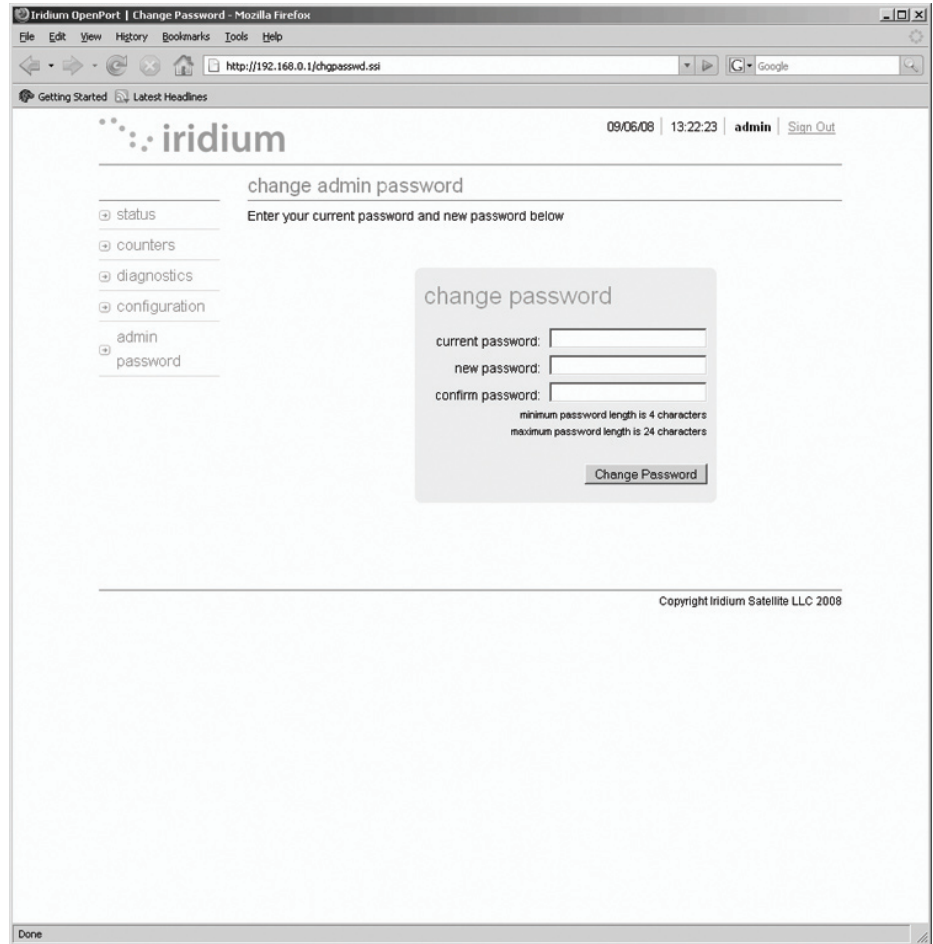
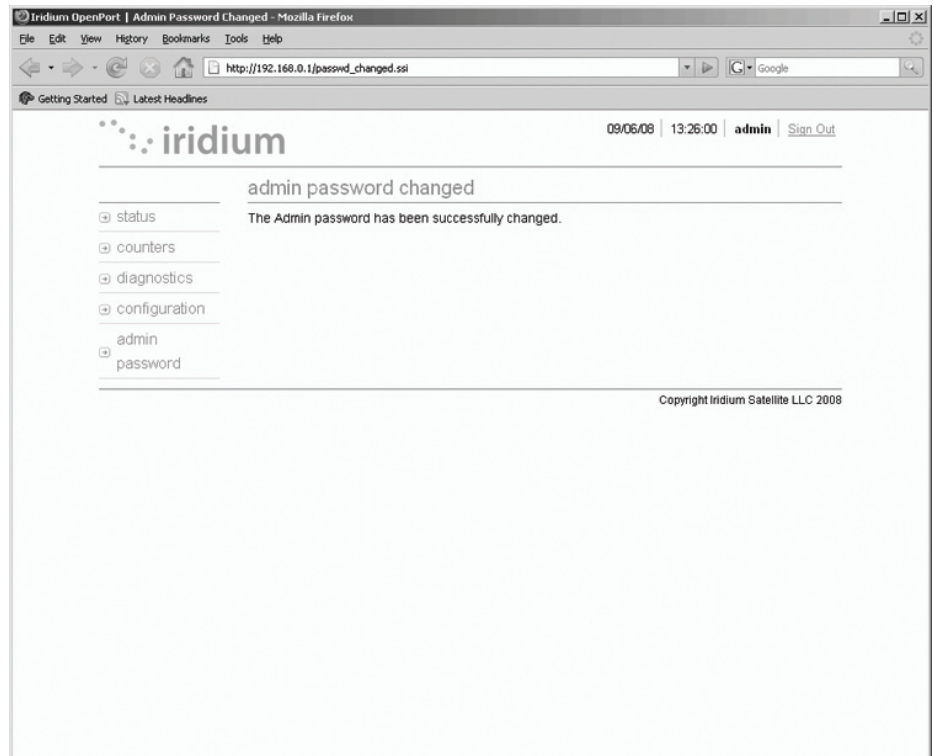


Figure 5 | 8



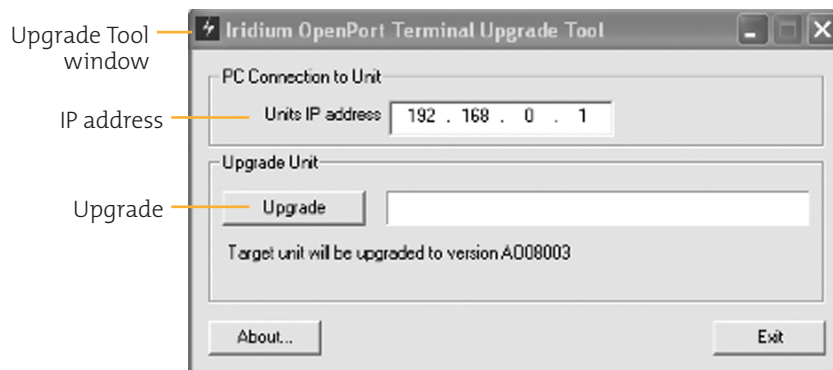
## Software Upgrade

To upgrade the software you need:

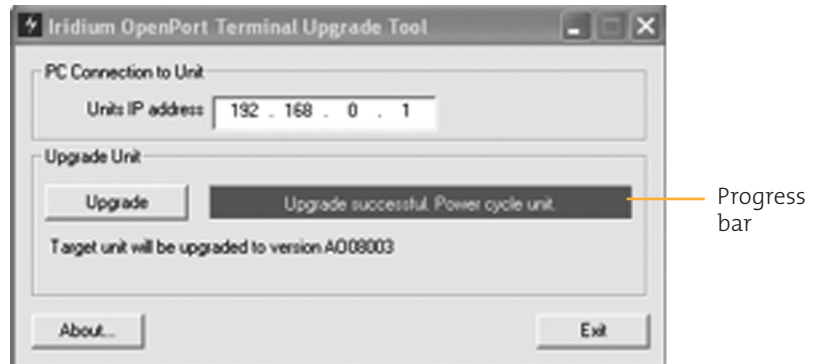
- A windows-based PC
- Standard Ethernet cable
- OpenPort Terminal Upgrade Tool executable software

Follow these steps to upgrade the software:

1. Connect PC to OpenPort data port with a standard Ethernet cable.
2. Open a browser and verify connectivity with the OpenPort terminal by navigating to 192.168.0.1, which is the default IP address assigned to all OpenPort terminals at the factory. If the default has been changed, enter the new IP address of the terminal.
3. If you see the OpenPort status web page, proceed to step 4. Otherwise, you may need to configure TCP/IP properties in your computer – please refer to Section 4.12 for detailed instructions on computer setup.
4. Double click the OpenPort Upgrade tool executable. The following window will appear. Enter the IP address of the OpenPort terminal.



- Click the “Upgrade” button to start the upgrade process. The progress bar will move from 0 to 100 as the upgrade takes place. Once the upgrade process is complete, the message “Upgrade successful. Power cycle unit” will appear.



- Turn the unit off for 10 seconds and then turn it on again. You must leave power on for 1 minute after the power cycle to prevent reversion to the old software version.
- To verify that the new software version was installed, connect to the OpenPort Admin web page (see step 2), and click “diagnostics”. The software version is displayed on this page.

# 6 | Testing the System

1. Check LEDs as expected :
  - Power LED is green, power is being provided to the BDE and it is switched ON
  - Status LED is amber, BDE and ADE can communicate
  - Signal LED is amber or green, ISU can see satellite network
  - GPS LED is green, ISU knows where it is
2. Bring up web pages, do any configuration needed.
3. Run site survey tool and retrieve results.
4. Make a voice call from every provisioned line, if any captain's phones if possible check voicemail.
5. Make a data call if provisioned, i.e. bring up a web page from an internet browser for example [www.iridium.com](http://www.iridium.com)

# 7 | Educate the Customer

After installation show the customer:

1. How to turn the system ON and OFF.
2. How to place phone calls and connect to the Internet.
3. Basic diagnostics (refer to Section 8: Basic Diagnostics)
4. Administrator diagnostics (refer to Section 5: Initial System Configuration).



# 8 | Basic Diagnostics

## ISU Web Pages

The user can access any web page with the “Basic” heading. Configuring the system and full diagnostics can only be done by the System Administrator and requires a login password. The following Basic diagnostics and configuration capability is available to the user.

### To access the ISU Web Pages:

1. Connect a PC to the data port on the BDE
2. Open the web browser and in the web browser address window, type `http://192.168.0.1`.

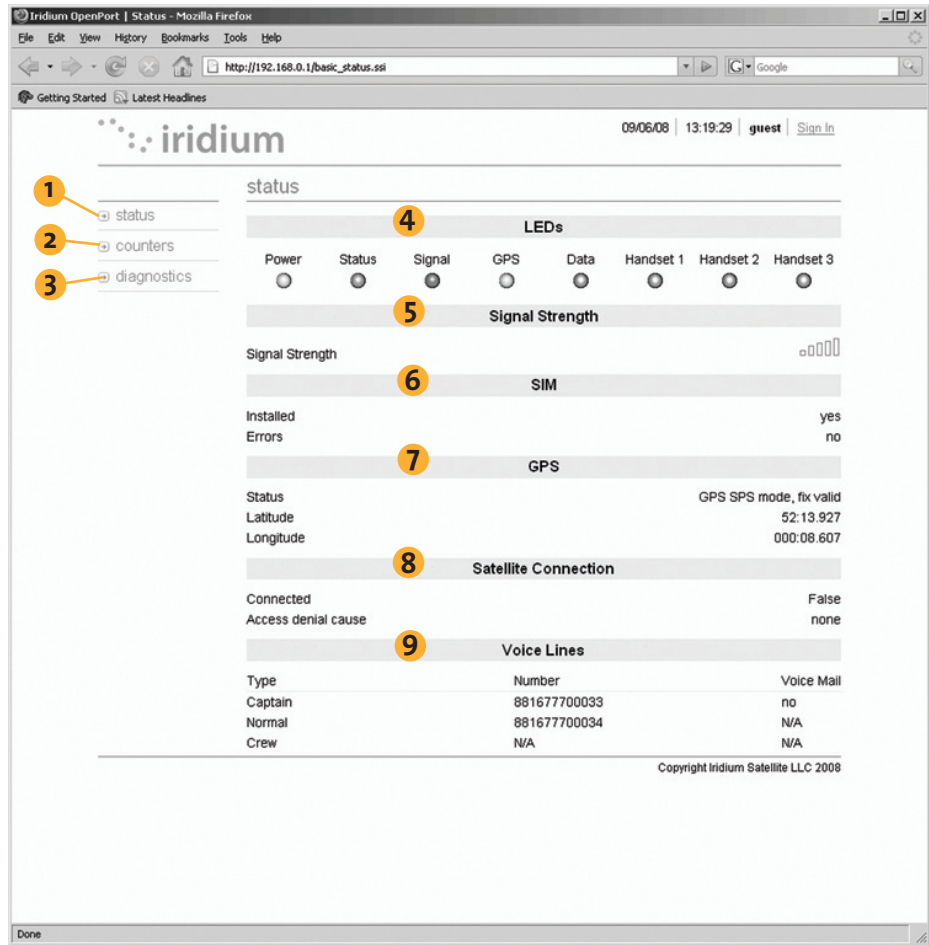
**Note:** The default IP address is assigned to the ISU at the factory. The IP address can be changed if there are multiple ISU's at a single site. If this has been done then type in the new IP address. To reset the IP address back to the default (192.168.0.1), press the network reset button on the BDE.

3. Select the appropriate link:
  - Basic Status
  - Basic Counters
  - Basic Diagnostics

**Note:** The information displayed on the web pages is not dynamically updated. To update the information, refresh the web page from your browser.

# Basic Status

Figure 8 | 1



**Select to link to:**

- 1. Status
- 2. Counters
- 3. Diagnostics

**Indicators:**

- 4. LEDs
- 5. Signal Strength
- 6. SIM
- 7. GPS (status, location)
- 8. Satellite Connection
- 9. Voice Lines



# Basic Counters

Figure 8 | 2

The screenshot shows the Iridium OpenPort web interface. The browser address bar indicates the URL is `http://192.168.0.1/counters.ssi`. The page title is "counters". The sidebar on the left has three links: "status" (1), "counters" (2), and "diagnostics" (3). The main content area is divided into two sections: "Voice Calls" (4) and "Data" (5).

Voice Calls	
Total calls	0
Calls in progress	0
Line 1 last call duration	00:00:00
Line 2 last call duration	00:00:00
Line 3 last call duration	00:00:00
Total call duration	00:00:00
Average call duration	00:00:00

Data	
Session established	False
MB Received	0
KB Received	0
B Received	0
MB Transmitted	0
KB Transmitted	0
B Transmitted	0
Total MB Received	0
Total KB Received	0
Total B Received	0
Total MB Transmitted	0
Total KB Transmitted	0
Total B Transmitted	0

Copyright Iridium Satellite LLC 2008

## Select to link to:

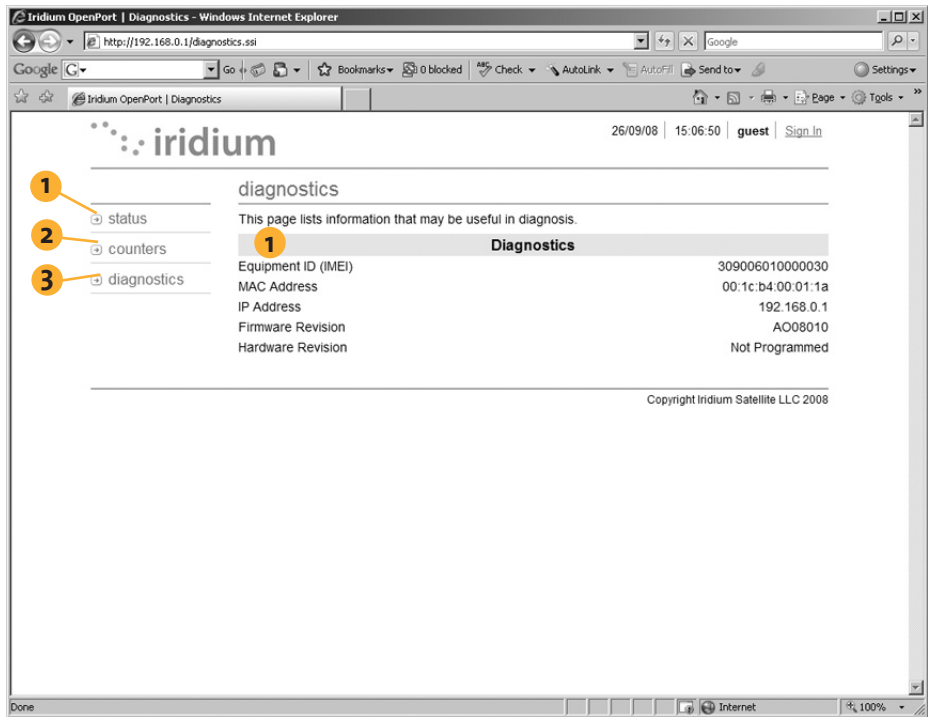
1. Status
2. Counters
3. Diagnostics

## This page provides:

4. Voice Call information
5. Data Use information

# Basic Diagnostics

Figure 8 | 3



## Select to link to:

1. Status
2. Counters
3. Diagnostics

## This page provides:

1. Useful diagnostic information such as:
  - Equipment ID
  - MAC & IP address
  - Hardware & Firmware revision level

# 9 | Troubleshooting

Troubleshooting may be conducted through the ISU Web Pages or BDE LEDs:

LED	Off	Green	Green Flashing	Amber	Red	Red Flashing
<b>power</b>	No power supplied to BDE	Power supplied to BDE and BDE switched on. Power is being passed to ADE.	Not Used	Power supplied to BDE, BDE switched off	Not Used	Not Used
<b>status</b>	Idle: connected to the Iridium network but no traffic	Active: Voice or data is being transferred to/ from the Iridium network	Not Used	Standby: not connected to the Iridium network.	Not Used	BDE cannot communicate with ADE – check connections.
<b>signal</b>	Not Used	Strong network signal detected	Not Used	Weak network signal detected	No network signal detected.	Not Used
<b>GPS</b>	Not Used	GPS signal available to ADE	Not Used	Not Used	No GPS signal	Not Used
<b>data</b>	Data port not provisioned.	Data port provisioned for use.	Flashing when data call in progress	Access to network denied - see Web Page for details.	SIM problem	Not Used
<b>voice 1</b>	Voice port 1 not provisioned. * Or handset off hook.	Voice port 1 provisioned for use.	Incoming call (ringing) or call in progress.	Access to network denied - see Web Page for details.	SIM problem	Not Used
<b>voice 2</b>	Voice port 2 not provisioned. * Or handset off hook.	Voice port 2 provisioned for use.	Incoming call (ringing) or call in progress.	Access to network denied - see Web Page for details.	SIM problem	Not Used
<b>voice 3</b>	Voice port 3 not provisioned. * Or handset off hook.	Voice port 3 provisioned for use.	Incoming call (ringing) or call in progress.	Access to network denied - see Web Page for details.	SIM problem	Not Used

\* The BDE does not know what services are provisioned until it has connected to the network so this LED will be off at initial power up.

Suggested actions for the following fault conditions:

LED	Color	Reason	Suggested Action
power	Off	No power supplied to BDE	Get a qualified person to check the power being supplied to the BDE, it should be between 11 – 32VDC at the input to the BDE and capable of providing up to 50W.
power	Amber	Power supplied to BDE, BDE switched off	Remove the SIM cover and ensure that the on/off switch is in the on positions. With this switch in the on position the LED should be green. If the switch is on and this LED remains amber then call your service provider for assistance.
status	Red Flashing	BDE cannot communicate with ADE – check connections.	Get a qualified person to check the connection between the BDE and ADE, this should include the connections at the BDE and ADE and the entire cable between them.
signal	Red	No network signal detected.	It is valid for this LED to go red for short periods of time but it should not remain red. If it remains red it implies that there is a problem with the equipment. Please call your service provider and report all the information you can see on the web pages as well as the LED colors.
GPS	Red	No GPS signal	You may be in an area where a GPS signal cannot be received, if the vessel moves and the problem persists then contact your service provider and report that internal GPS has failed.
data	Amber	Access to network denied - see Web Page for details.	Access to the Iridium network has been denied, there are a number of reasons for this below for details (see Access Denied table, page 9.3).
data	Red	SIM problem	Check SIM inserted correctly and SIM lock on SIM holder pushed across. Check you have a valid OpenPort SIM.
voice	Amber	Access to network denied - see Web Page for details.	Access to the Iridium network has been denied, there are a number of reasons for this below for details (see Access Denied table, page 9.3).
voice	Red	SIM problem	Check SIM inserted correctly and SIM lock on SIM holder pushed across. Check you have a valid OpenPort SIM.

## Access Denied

Denial of access will be indicated by the voice and data LEDs on BDE illuminating Amber. Access to the Iridium network may be denied for a number of reasons. The following items contain information that you may be asked to provide when contacting your service provider.

Reason	Suggested Action
TMSI invalid	Unit will automatically try to access the network using the IMSI.
IMSI invalid	Call service provider.
Authentication Failure	Check SIM status on Status web page, check using a valid SIM card. If all ok call service provider.
IMEI Blacklisted	Call service provider
Indeterminable Location	Check GPS LED on BDE. If LED is green, check GPS status on web page. Contact Service Provider with this information and denial information.
Restricted Area	Wait until move into different geographical area

# Appendix A | Approvals

## FCC Declaration for 9701

This equipment has been tested and found to comply with the limits for a Class B digital device, pursuant to Part 15 of the FCC Rules. These limits are designed to provide reasonable protection against harmful interference in a residential installation.

This equipment generates, uses and can radiate radio frequency energy and, if not installed and used in accordance with the instructions, may cause harmful interference to radio communications. However, there is no guarantee that interference will not occur in a particular installation.

If this equipment does cause harmful interference to radio or television reception, which can be determined by turning the equipment Off and On, the user is encouraged to try to correct the interference by one or more of the following measures:

- Reorient or relocate the receiving antenna.
- Increase the separation between the equipment and receiver.
- Connect the equipment into an outlet on a circuit different from that to which the receiver is connected.
- Consult the dealer or an experienced radio/TV technician for help.

Modifications to this device not expressly approved by Iridium Satellite LLC may void authority granted under the rules of the Federal Communications Commission to operate this device.

## Industry Canada

This product is compliant with Industry Canada RSS-102 for RF Exposure.

The 9701 BDE is a Class B digital apparatus and complies with Canadian ICES-003.

Cet appareil numérique de la classe B est conforme à la norme NMB-003 du Canada.

## FCC Declaration of Conformity

### Declaration of Conformity

On behalf of Iridium Satellite LLC, I declare under penalty of perjury that the following device complies with the requirements of the United States Federal Communications Commission pertaining to a personal computer peripheral device:

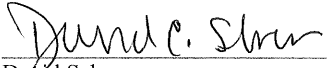
Identification: Iridium Broadband Terminal, Below Decks Equipment, Model 9701

Compliance Statement: This device complies with Part 15 of the FCC Rules. Operation is subject to the following two conditions: (1) this device may not cause harmful interference, and (2) this device must accept any interference received, including interference that may cause undesired operation.

Responsible Party: Iridium Satellite LLC  
6707 Democracy Blvd.  
Suite 300  
Bethesda, MD 20817  
U.S.A.

Telephone: 1.301.571.6200

Date: 9/16/2008

  
\_\_\_\_\_  
David Schoen  
VP Engineering  
Iridium Satellite LLC

# EU Declaration of Conformity



Declaration of Conformity  
9801 OpenPort Terminal

## Declaration of Conformity – EC Directive

This is to certify that the following equipment complies with all relevant Essential Health and Safety Requirements of the Radio and Telecommunications Terminal Equipment Directive 1999/5/EC and the Low Voltage Directive 73/23/EC as amended by 93/68/EC.

<b>Equipment description</b>	Iridium 9801 OpenPort Above Decks Equipment (ADE)
<b>Serial numbers tested</b>	900A0K, 900A0L, 900A0M, 900A0N, 900A0P
<b>Manufacturer</b>	Celestica, No 10&10A, 81200 Johor Bahru, Malaysia.
<b>Issue date</b>	15 <sup>th</sup> August, 2008

The following harmonized standards were applied to the design of the handset:

Low Voltage Directive	Test Report	Report Date
EN 60950-1:2002	SU3664/8725	15 <sup>th</sup> August 2008
R&TTE Directive - EMC	Test Report	Report Date
EN 301 489-20 V1.2.1 (2002-11) & EN 60945:2002	EU2780/8579	13 <sup>th</sup> May 2008
R&TTE Directive - Radi	Test Report	Report Date
EN 301 441 V1.1.1 (2000-05)	RU1427/8509 RU1496/8759	2 <sup>nd</sup> June 2008 3 <sup>rd</sup> Sept. 2008

The Test Report References above are test reports prepared by TRL Compliance Ltd, Moss View, Nipe Lane, Up Holland, West Lancashire, WN89PY, UK.

Accreditation references: TRL - UKAS 0728 and BSI FS 21805

The project master file, which contains or references all necessary documents to make up a "technical file", is retained by Iridium satellite, LLC

The OpenPort 9801 Certification is dependent on the following criteria:

1. The OpenPort ADE is installed and used as described in OpenPort User Guide
2. The OpenPort ADE is only used with an OpenPort 9701 Below Decks Equipment (BDE)
3. The OpenPort ADE is manufactured by Celestica or an equivalent competent manufacturer adopting the same process with equivalent quality levels.

I am satisfied that relevant standards have been used in the design, the above documentation exists in the project Master File, and that the product will be labelled with the CE mark before despatch.

<b>Signed</b>		VP, Engineering
<b>Date</b>	September 16, 2008	



Your comments and suggestions are welcome and greatly appreciated. They help us develop superior products for demanding professionals like you. For additional information about Iridium products and services, please contact Iridium as follows:

By Telephone: Customer Service

Toll Free Number from USA: +1-866-947-4348  
Local or International Number: +1-480-752-5155

By E-mail: [info@iridium.com](mailto:info@iridium.com)

By Mail: Iridium Satellite LLC

Attn.: Customer Service

8440 South River Parkway

Tempe, AZ 85284 USA

## BDE Drill Template

Use template to drill mounting (3 total) screw holes. If you print the °template, ensure the scale is 100%. Check all dimensions before drilling the wall.

TOP

222.6 mm

76.9 mm

169.5 mm

BOTTOM

